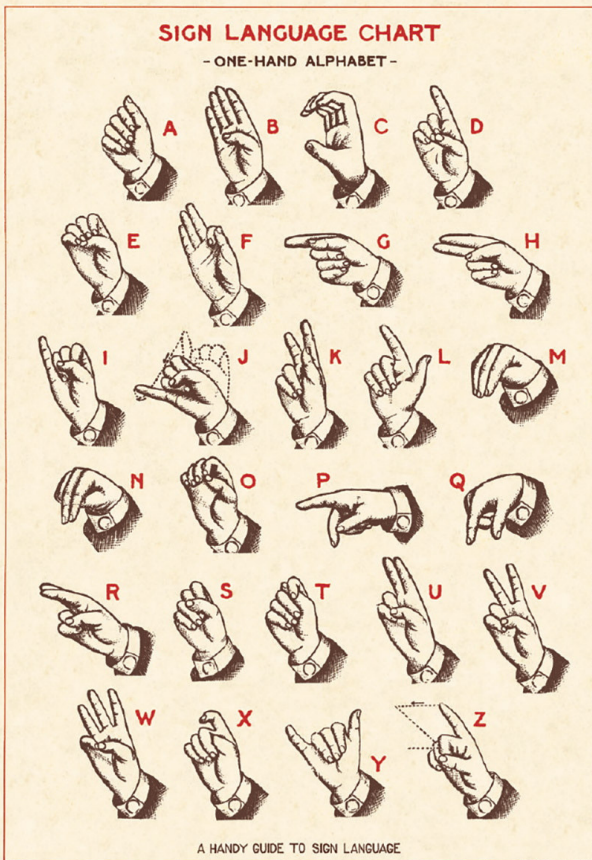




En el Centro para el Desarrollo de Competencias Lingüísticas ofrecemos tutorías de redacción, lectura analítica y crítica, métodos de documentación e investigación, desarrollo de pensamiento crítico y producción oral, tanto en inglés como en español.



ASL EN PUERTO RICO

- La comunidad Sorda en Puerto Rico utiliza una variación del Lenguaje de Señas Americano (American Sign Language; ASL), un idioma visual que utiliza movimientos manuales, faciales y corporales para representar conceptos.
- ASL se diferencia tanto del inglés hablado como de otros lenguajes de señas internacionales. Contiene todas las características fundamentales del lenguaje: sus propias reglas de pronunciación, sintaxis y una gramática compleja.
- ASL tiene dialectos y acentos regionales; por ejemplo: variaciones en el ritmo de las señas, forma y pronunciación. Así pues, el lenguaje de señas en Puerto Rico cuenta con regionalismos que lo distinguen.

(National Institute on Deafness and Other Communication Disorders; Prensalibre)

Practice the ASL alphabet by spelling the following linguistic terms:

| | |
|-------------|--|
| deixis | marks the orientation or position of objects and events with respect to certain points of reference |
| gestuno | established in the 1970s as an attempt to create an international sign language; also known as International Sign Pidgin |
| prosody | elements of speech that contribute to the functions of intonation, tone, stress and rhythm |
| iconicity | the conceived similarity or analogy between the form of a sign (linguistic or otherwise) and its meaning |
| dactylology | the representation of the letters of a writing system using only the hands; also known as fingerspelling |

(Sources below)

"Sign is a live, contemporaneous, visual-gestural language and consists of hand shapes, hand positioning, facial expressions, and body movements. Simply put, it is for me the most beautiful, immediate, and expressive of languages, because it incorporates the entire human body."

- Myron Uhlberg



THE SHAPE OF WATER (2017) | Dir. Guillermo del Toro

Set in 1960s Baltimore, Elisa (Sally Hawkins) is a mute woman who works in a top-secret research facility, where she discovers an amphibious creature being held in captivity. As Elisa plots to free the being, they develop a unique romantic relationship.

Winner of four Academy Awards including Best Picture, the success of *The Shape of Water* illustrates a notable increase in the representation of deaf characters and the use of sign language in film. Although Hawkins is not deaf, other recent movies starring deaf actors include: *The Tribe* (2015), *Septiembre* (2017), *Baby Driver* (2017), *The Silent Child* (2017), *Wonderstruck* (2017), and *A Quiet Place* (2018).